

Frequently Asked Questions

8 December 2023



Manilla Solar farm Pty Ltd

www.manillasolar.com.au



Frequently Asked Questions

Investment and Finance

1. How can I invest?
2. Who can invest?
3. Am I buying shares?
4. How can I find more details?
5. How can I help?
6. Where will the solar farm be located?
7. How much ground will the solar farm take up?
8. Will the Solar farm be seen from the road?
9. How long will the solar farm be there?
10. Who is building the solar farm?

Community and Environment

11. What will the community gain from the solar farm?
12. Will new power lines need to be created and will these be above or below the ground?
13. Will the land still be used for agriculture?
14. Where will power lines from the farm go and where to?
15. Will mining jobs be adversely affected?
16. What are the environmental impacts?

Residents

17. How will the residents of Manilla benefit?
18. Will I be able to buy cheaper electricity?
19. Will the solar farm be an eyesore for visitors to Manilla?
20. Whose land is the solar farm being built on?.
21. How long will it take for the solar farm to be built?



Investment and Finance

1. How can I invest?

Investment is made through a crowd raising website called [Swarmer.com.au](https://swarmer.com.au). You can invest now via our landing page on the Swarmer website. Go to swarmer.com.au then click on the Invest drop down menu and click "Offers". Then click on the Swarmer. Or find the links to our landing page on Swarmer via our [Facebook page](#). Investment is currently open until Thursday 14th December, 2023.

2 . Who can invest?

Anyone over 18.

This early stage investment raise is an opportunity for local community members and long standing supporters to become shareholders and back the project. However, it is open to anyone over 18.

By using crowd equity, or more accurately, "Crowd Sourced Finance", everyday community members can invest from as little as \$60. Using crowd equity, there is a limit for retail investors of up to \$10,000. Sophisticated and wholesale investors can invest more.

3. Am I buying shares?

Yes, every investor gets ordinary shares in Manilla Solar farm at the same price as the pre-seed investors. Each ordinary share costs \$0.80 and the minimum investment is AUD60.00.

4. How can I find more details?

You can read our very detailed Offer Document via our landing page on Swarmer. Or visit our [website](#) and [Facebook page](#). We also have webinars and [events listed](#) on our website.

5. How can I help?

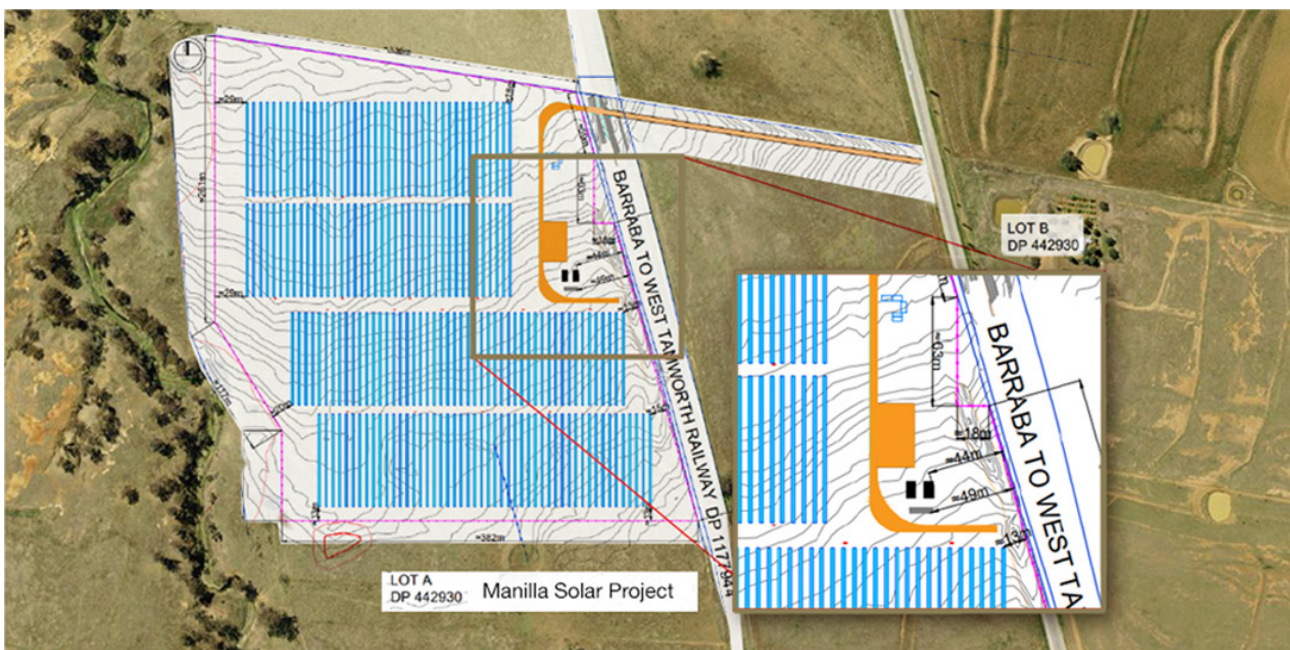
We would love your support! There will be many opportunities to support the project in the future. For now you can spread the word, like us on Facebook, share our posts, attend an event or webinar and sign up to our newsletter (via our website www.manillasolar.com.au) to keep updated.



The Manilla Community Solar farm

6. Where will the solar farm be located?

It is situated on the property 'Alexandres' 4133 Manilla Road, Manilla NSW 2346. approx 4 minutes south of Manilla / opposite the radio town. You can see a map and site plan below - also available on our [website](#).



The solar project footprint will be approx. 16 hectares on 'Alexandres' 4133 Manilla Road, Manilla 2346.

7. How much ground will the solar farm take up?

The footprint is approximately 16 hectares of land between Greenhatch Creek and the disused Tamworth Barrada Railway line.

8. Will the solar farm be seen from the road?

Part of the development plan is to plant a screening of trees, to act as both a visual shield and animal habitat around the project.

9. How long will the solar farm be there?

Solar farm will have a lease of 35 years. Part of the operations plan is to remove all infrastructure on the land once solar farm is completed.



10. Who is building the solar farm?

The process of contracting who will build the solar farm will be part of the next phase of the project, along with all the other jobs in construction, etc. The Directors of Manilla Solar farm shall be using a Matrix that gives local contractors an additional preference when deciding how sub-contracts are awarded. If you are interested in providing services to the project, please email bepartof@manillasolar.com.au

Community and Environment

11. What will the community gain from the Manilla Solar Project?

The Manilla Solar Project plans to provide an annual community benefit fund. The amount estimated to be \$50,000 pa shall be provided to MCRE as community benefits fund. The MCRE committee at the time will evaluate options and decide in collaboration with the community for the allocation of grant funding for local initiatives.

12. Will new power lines need to be created and will these be above or below the ground?

No new powerlines will be required as a result of the solar farm. The existing line was upgraded this year along Manila road and that will be sufficient for this project. A benefit of solar farms of this scale is that they can connect into and utilise existing power lines, compared to some larger renewable energy projects that require line upgrades or new transmission.

13. Will the land still be used for agriculture?

Yes, the solar farm will run sheep in the paddock.

14. Where will power lines from the farm go and where to?

The solar farm will supply power into the local power grid owned by Essential Energy that supplies our home, businesses and industry. The electricity will be sold via the NSW segment of the National Electricity Market.

Importantly, speed to market is one of the biggest success factors as we are currently in a period of high electricity prices. The sooner the Manilla Solar farm is constructed, the sooner Manilla Solar can participate in this favourable market condition.



15. Will mining jobs be adversely affected

The answer to this is No. As the world shifts more and more to less carbon emitting power production like Solar farms. Coal powered generators and coal mines will be slowly phased out. NSW state government plans to close existing coal-powered generators in the next 10-15 years. This solar farm is unlikely to have any impact on that reality but does provide local energy generation.

The advantage of having a local solar farm is that it may help provide the opportunity for local jobs as this transition occurs. SO the hope of a local solar farm is to help preserve job opportunities for local population in the power sector.

16. What are the environmental impacts?

The proposed area is a field without trees. No trees of significant animal habitat will be lost. In fact, the plan is to create a several tree thick habitat, so that the solar farm is not easily seen from the road. Water usage from the solar farm will be minimal .

Residents

17. How will the residents of Manilla benefit?

The benefits may be both direct and indirect. The solar farm plans to produce cheaper electricity, a portion of which is planned to be made available to residents. The other benefits include energy being a local industry which can improve local economy. The Community Benefit Fund plans to provide various community events and opportunities. Local investors will get a sound return.

18. Will I be able to buy cheaper electricity?

Possibly.

The sale of cheaper electricity to local residents is part of the grant agreement. The decision of who electricity is sold too, and for how much will be a decision made by the directors / shareholders. If the project is owned by majority local shareholders those decisions will reflect their values/concerns

19. Will the solar farm be an eyesore for visitors to Manilla?

The D.A requires the project to plant a series of trees, several trees thick, to act as both a visual shield and animal habitat. In time, this will obscure the solar farm from the road.



20. Whose land is the solar farm being built on?

The Calokerinos Family. 'Alexandres' 4133 Manilla Road, Manilla NSW 2346.

21. How long will it take for the solar farm to be built?

Manilla Solar will continue development, finance and procurement activities in the first half of 2024. It is planned to be ready for investment and construction in the 2nd half of 2024. From construction readiness, construction will take 6-12 months depending on supply of key components and commissioning.



The Manilla Solar farm is expected to generate as much electricity as is necessary to power over 2,500 average NSW households*

based on an assumed household consumption of 2,500 kWh per year.

With an anticipated revenue of approx. over \$1 million per year, it will – if funded locally – keep an equivalent amount of funds in the region



Operation

Once the Manilla Solar farm is constructed and commissioned, it will generate electricity – a commodity centrally priced by the Australian Energy Market Operator (AEMO). During this phase, the Company will arrange for the technical maintenance, insurance and participation in energy markets.

One of MCRE's key ambitions for Manilla Solar farm is the sale of part of the electricity output to local residents and businesses so as to reduce their electricity bills.

Commitment to safeguarding the community interests

On 19 September 2023, MCRE, Manilla Community Power and the Company entered into a 'Safeguard Agreement' in which the parties agreed to contribute to MCRE's vision as follows:



MCRE works to build sustainable regional community projects that deliver social, environmental and economic returns.

Our mission is to promote the renewable energy transition in Northwest NSW and share a blueprint for other groups to do the same.

The Safeguard Agreement also secures ongoing funding for the activities of MCRE and commits Manilla Community Power and Manilla Solar to deliver a range of community benefits. It creates reporting and consultations mechanism that enable MCRE to act as 'custodian' of the community interest.

Business Highlights

MCRE and its industry partner submitted a grant application for \$3.5 million to the NSW Regional Community Energy Fund in 2019. Since the announcement of successful farmul grant funding in 2020, the Manilla Solar farm has achieved planning and grid connection approval.

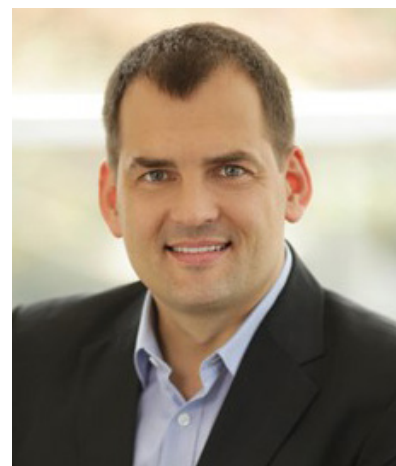
In the past 12 months, MCRE has – with the support of Komo Energy – negotiated terms for the due diligence and acquisition of the Manilla Solar farm from its industry partner. This process is flanked by the creation of Manilla Community Power and the Company and the present Offer.

.What does our organisation look like?

The Company is established solely for the purpose of acquiring, further developing, procuring, financing, constructing, owning and operating the solar component of the Manilla Solar farm. It has presently no staff.

Gerald Arends and Jonathan Prendergast are the directors of the Company. There are no Director fees.

Frequently Asked Questions



Gerald Arends

Gerald is a director of the Company. He is a leading renewable energy lawyer and commercial advisor and has worked almost exclusively in the solar industry in a variety of legal and commercial roles for the past 16 years. Within the Company, Gerald is responsible for project development and delivery.

Gerald is passionate about pioneering projects in countries and in sectors where renewable energy is not yet firmly established. He has worked in renewables in over 30 countries, including all over Europe, Japan, Thailand, the Philippines and Malaysia.

In Australia, he advised on pioneering renewable energy projects integrated into a remote mine site, such as the Degussa solar/battery integration project and the Agnew hybrid project, as well as large-scale projects such as the 20 MW Hughenden project in Queensland, the 112 MW Karadoc and the 106 MW Yatpool projects in Victoria.

Gerald seeks to transfer farmer skills from large-scale solar projects to smaller-scale but replicable renewable energy projects.

Gerald is a founder and director of Komo Energy, a group that partners with communities, landholders and businesses who want to invest in, develop and benefit from renewable energy. In addition, he is a director of Pegasus Legal, a boutique law firm advising on renewable energy projects. Gerald is also a conference speaker, panellist and a post-graduate teacher on topics relating to renewable energy.

Gerald grew up in Germany and has lived and worked in England, Greece and Germany before moving to Australia in 2011. While not native to the region, Gerald feels deeply connected with, and spends much time in, the New England region due to his wife having grown up and having family ties there.

When not working on renewables, he spends time with his family and young kids. He enjoys reading widely across current affairs, history, philosophy, politics and linguistics. Gerald has played the violin for most of his life and is both President and an active member of the Brisbane Symphony Orchestra.

Frequently Asked Questions



Jonathan Prendergast

Jonathan is a director of the Company. He is a project manager, engineer and procurement specialist recognised for his work at the forefront of renewable energy procurement strategies and business models. Within the Company, Jonathan is responsible for energy markets, community and investor engagement.

With over 15 years' experience in clean energy, Jonathan has extensive commercial and technical knowledge, having managed and advised on a number of projects from feasibility through to implementation.

Jonathan consults to universities, renewable energy project developers, councils and property developers across Australia. His deep understanding of energy markets, contracts and procurement enables him to unlock new business models to deliver projects. He has achieved several Australian 'first' innovative energy projects, including the development of Australia's first district heating system, district cooling customer agreement and offsite solar PPA.

He is a founder and director of Komo Energy, a group that partners with communities, landholders and businesses who want to invest in, develop and benefit from renewable energy.

Jonathan sees significant opportunity for more innovation in community scale projects, including innovative financing, power purchase agreements and microgrids.

Jonathan is passionate about community, sports and the outdoors. He co-founded Sunny Shire, a local community energy group in the Sutherland Shire (Sydney), which supports Shire families in the adoption of solar, storage, home energy efficiency and electric vehicles. Recently, Sunny Shire's solar bulk buy enabled 200 Shire families to get rooftop solar from local suppliers.

Jonathan lived in Japan for 1.5 years and loves to travel back to visit. He also enjoys playing soccer, skiing and getting his young kids outdoors and enjoying nature.

Frequently Asked Questions



Manilla Community Renewable Energy

Manilla Community Renewable Energy Inc. is formed from a group of people from the Manilla area, who see the potential for renewable energy.

By creating a community owned renewable energy company, local residents will benefit from the economic, environmental and community building aspects of the project as well as creating a model of sustainable regional development.

In 2016, MCRE was awarded 'Community Energy Grant' of \$46,000 to investigate the feasibility of a community owned solar and bio-gas project.

In 2020 MCRE was awarded "Growing Community Energy Grant" of \$3,500 000 to for a community solar and battery project.

Manilla Community Renewable Energy Inc. has the support of over 300 local residents and businesses including Tamworth Regional Council and the Manilla Branch of the CWA, State and Federal members of parliament.

MCRE welcomes new members and meets monthly.

Our 2023 Committee

Emma Stilts	Brad Pilon
Roxanne Lawson	John Calokerinos
Michelle Eggins	Penne Fraser

Happy days = the MCRE committee and supporters receive RCEF cheque from MP for Tamworth Kevin Anderson at the 2020 Manilla Show





Testimonial



John Calokerinos, Emma Stilts and Gerald Arends

“ I was born and raised in Manilla and have supported the establishment of the Manilla solar project for the past 6 years.

MCRE was planning the solar farm and looking for suitable land no more than 5km from the Manilla electricity substation. Nobody else came forward with a suitable site so I offered a site on our farm!

This project aligns with my personal values of supporting community and supporting sustainability and it is a natural extension of farm diversification. If Manilla could do this, then anyone can! ”

*John Calokerinos, Manilla
Farmer and Solar farm Host*

Testimonial



" It is a privilege to be involved with a project that is building a solar farm in my own community.

I believe it will bring many benefits and opportunities to the people of Manilla, while contributing to a better future for us all for generations to come.

For me, it is about taking care of the planet and this project is a great way to do just that."

Fiona McNiven, Manilla



" Investing in Manilla Solar feels like the most powerful way I can make a contribution to the future of our region, and our planet.

Our environment is under pressure with climate change, yet the solution to this sometimes-overwhelming problem is literally on our doorstep.

Our people, our farms and our wildlife all depend on a safe climate, and we have an opportunity to help make this happen.

Manilla Solar is a 'home grown' renewable energy project that offers the community a localised power source, removing their reliance on polluting coal fired energy.

I admire and congratulate Manilla Community Renewable Energy Inc for their hard work and dedication."

Testimonial



" Hi, I'm Brad Pilon and I became a part of the Manilla Solar Project for many reasons. First and foremost, I really want to save our planet for our future generations to be able to live and enjoy the freedoms we have today.

I believe that our climate is changing quickly and not for the better, I want to be a part of the solution to hopefully reverse the side effects of climate change.

Renewable energy can be a part of the solution but not the whole solution, through the Manilla Solar Project I hope to help educate our community and others to live a cleaner life, this will help our beautiful environment survive for future generations to come. It is time for renewable energy to move forward faster and if we as a community start, then hopefully in the future all communities can learn and move forward in a better way.

So basically, I want to help drive change away from our current trajectory, this will also build our community resilience and allow us all to reap the benefits of doing it right."

Brad Pilon, Manilla

Testimonial



“ The Manilla Solar Project is the culmination of many years of work from a dedicated group of volunteers, who can see there is a smarter way to generate energy - that is community focused.

To everyone who has come to a MCRE meeting, and help make the 100 Mile Dinners and Renewable Manilla festivals happen

- thank you for your support and energy - We wouldn't be here without you!

We share a vision of community-owned power projects - where owning a <5MW power station can be made to benefit shareholders and our community - often the same folks!

On behalf of MCRE, we are thrilled the Crowd Raise is open and welcome your support. ”

**Emma Stilts, Moore Creek
President MCRE**

The sunsets over the crowd for the 100 Mile Dinner. Celebrating Local Produce + 25 years of Landcare. October 2019

